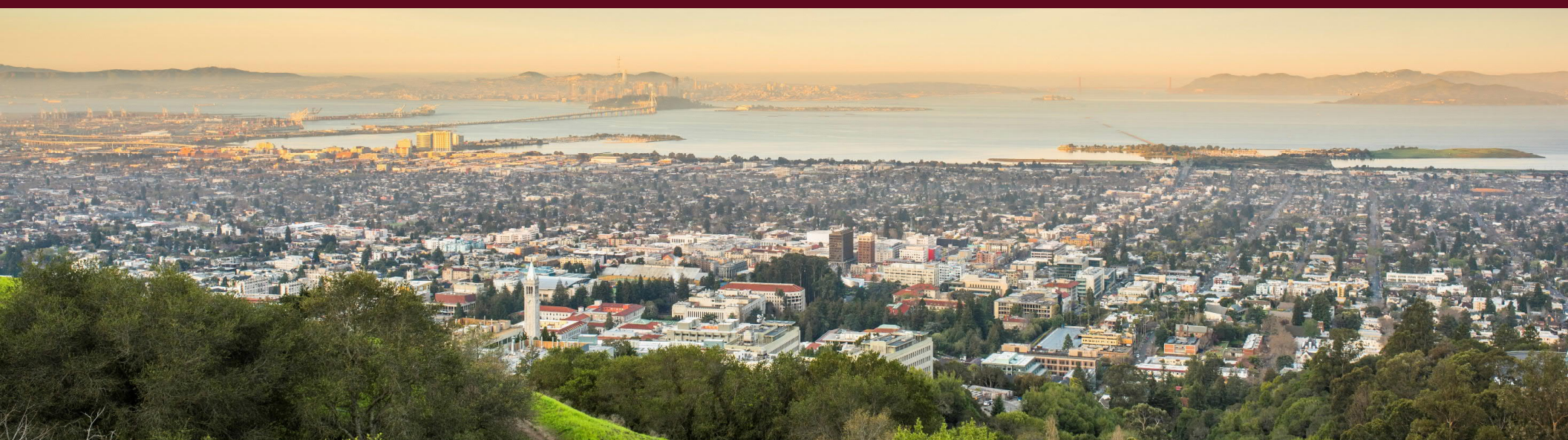


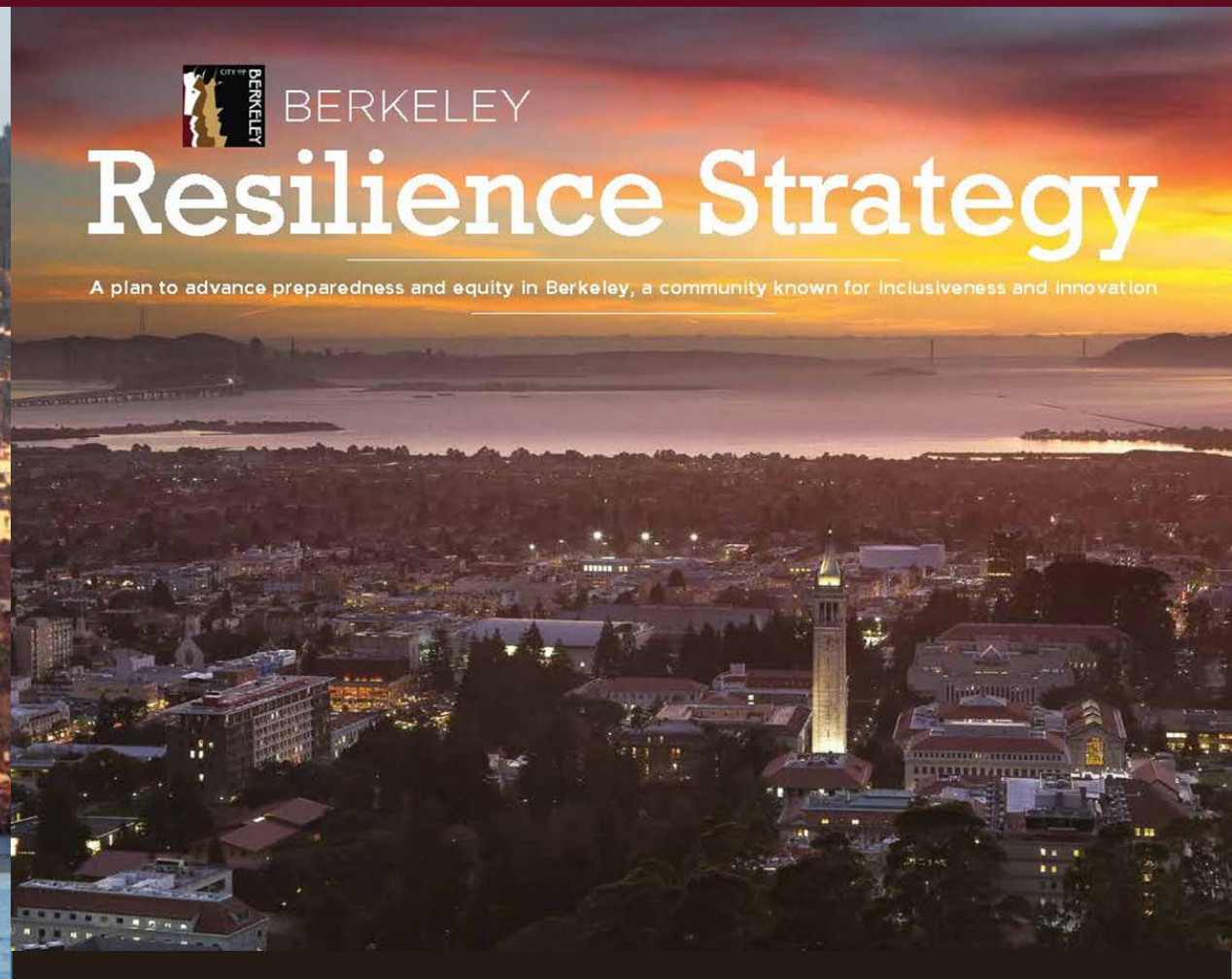
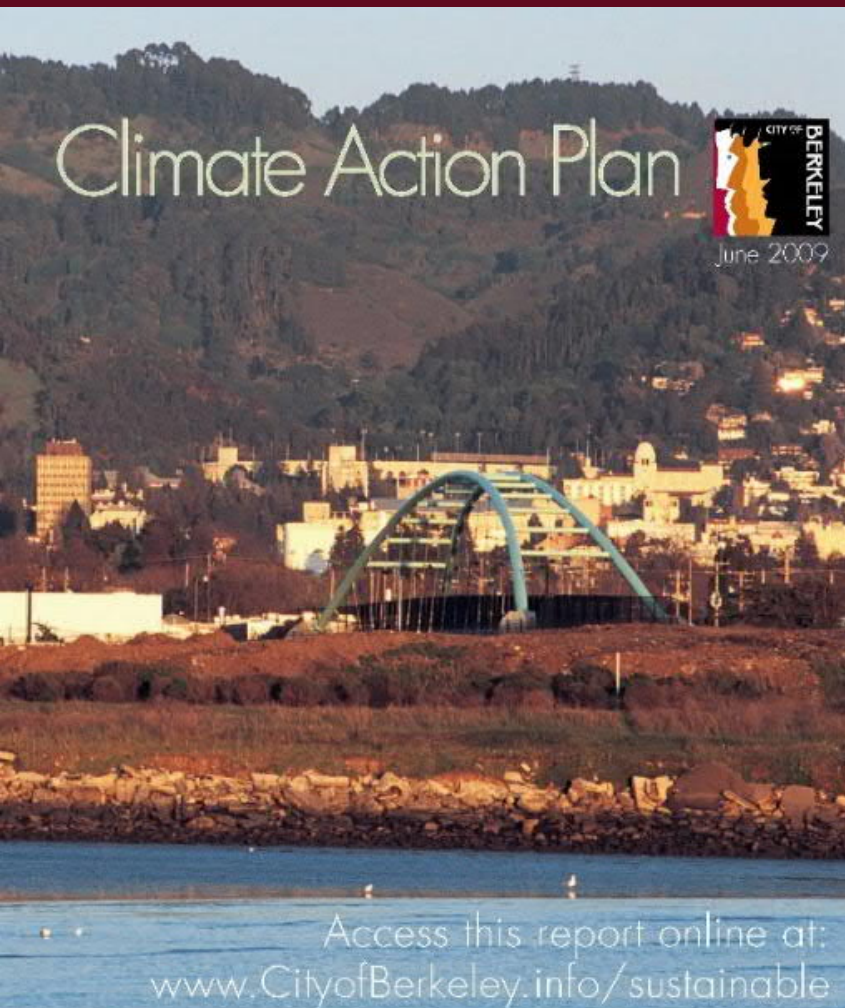


# Berkeley's Building Energy Savings Ordinance (BESO)

BayREN Q2 Forum



# Berkeley's Climate Commitments



# 100% Renewable Electricity



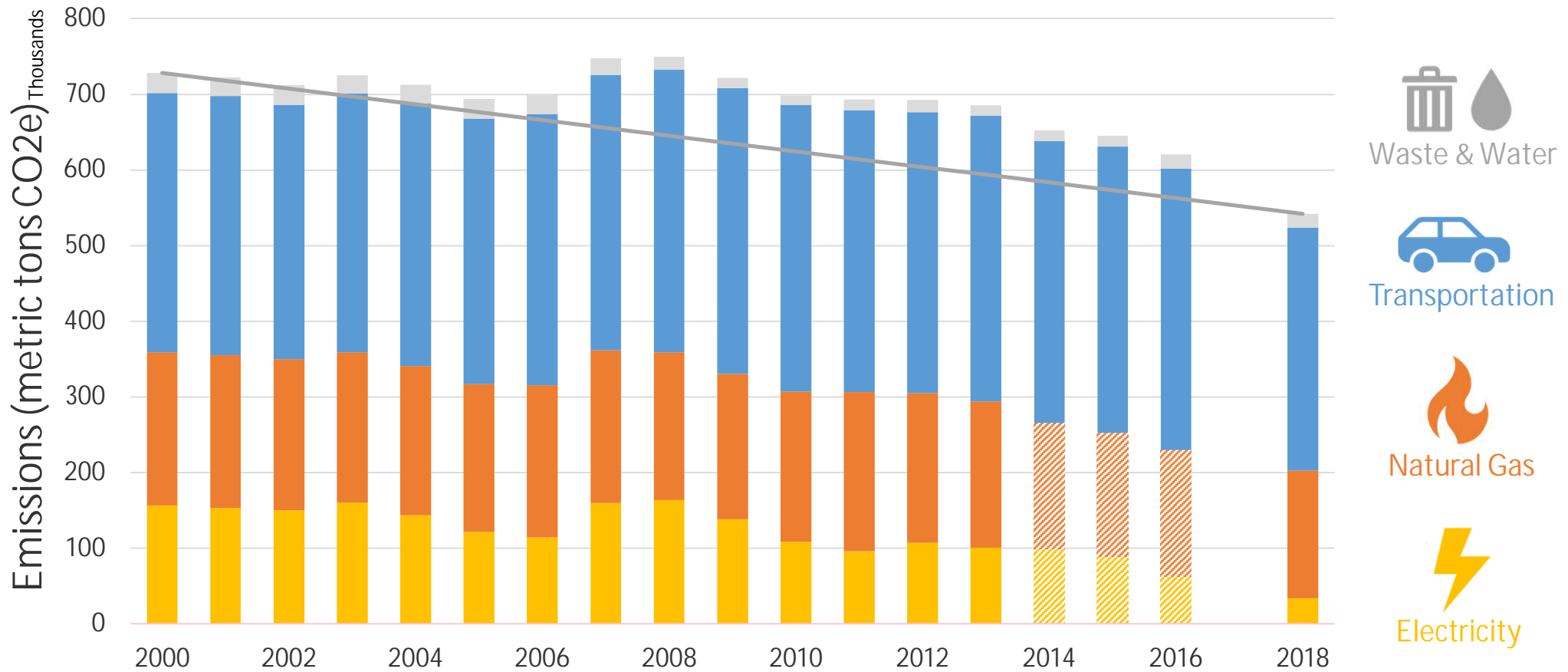
# Fossil fuel free city



# How do we get to ZERO?



## Community-Wide Emissions



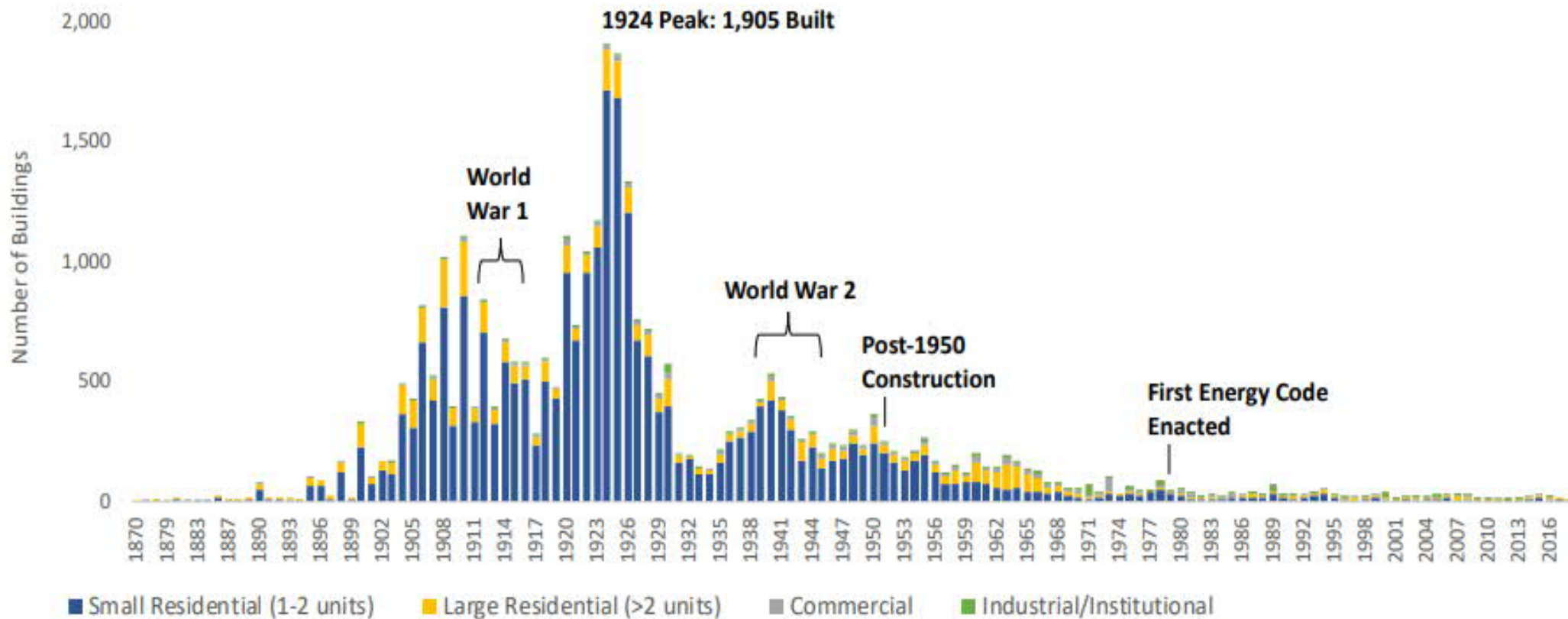
# Emissions from our Existing Buildings



38%



# Berkeley Building Stock Breakdown

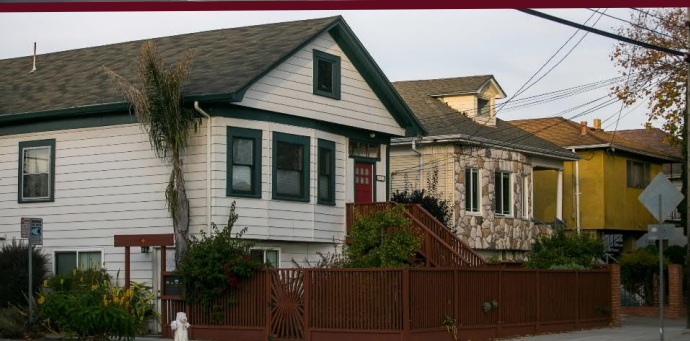
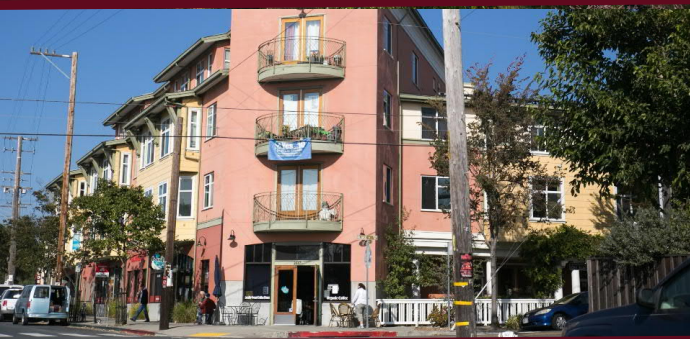


# Berkeley's History with Energy Efficiency





# BESO Requirements – 1-4 Unit Homes



- Assessment every 5 years
- Annual Benchmarking

- Assessment every 10 years

- Assessment at time of sale
- Energy Labeling & Disclosure

# Time of Sale Requirements



# Home Energy Score

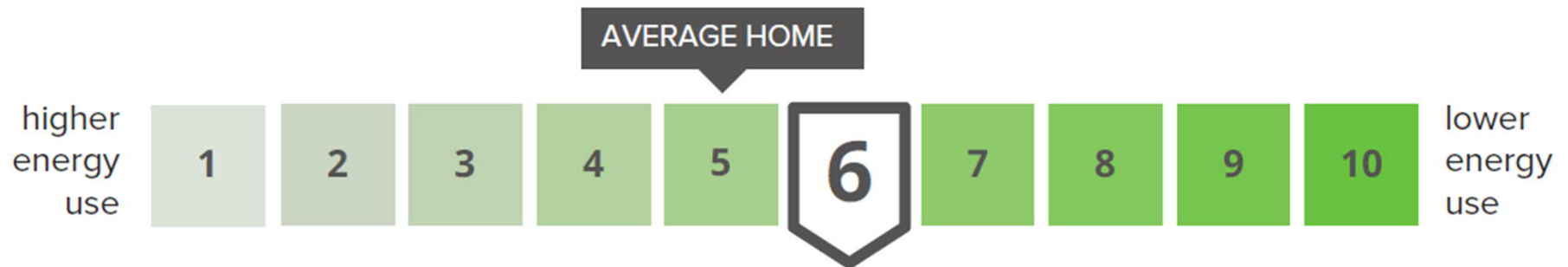
THIS HOME'S  
**HOME ENERGY SCORE**

**6** out of 10

THIS HOME'S ESTIMATED  
**ENERGY COSTS**

**\$2868** per year

## Home Energy Score details



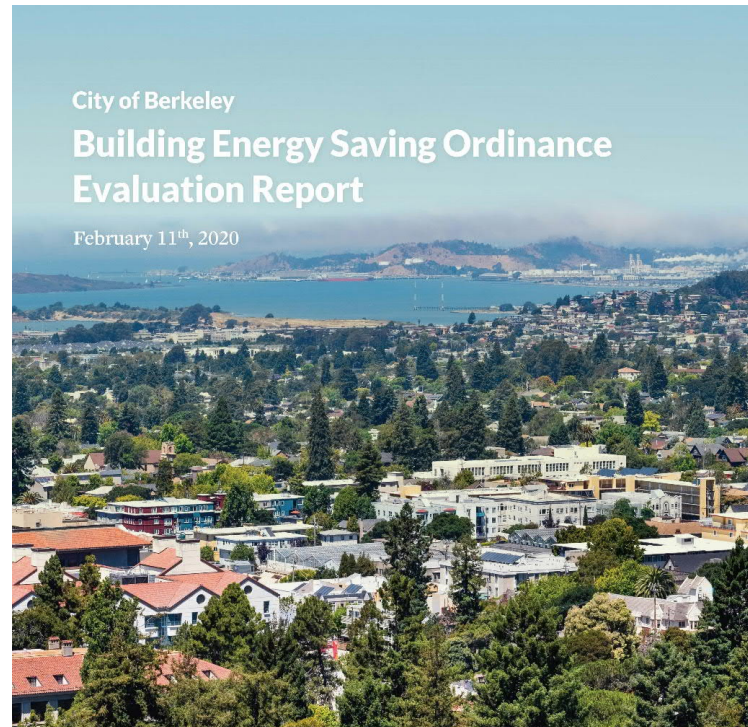
# Home Energy Score



1,757 Homes Scored

4.3 Avg. Score

# BESO Evaluation



**To: City of Berkeley**

Billi Romain  
Sustainability Manager

Marna Schwartz  
Sustainability Coordinator

Ammon Reagan  
Sustainability Program Coordinator

**From:**

Cassioce Kido  
Project Manager

Alameh Brooks  
Senior Engineer

Nate Dewart  
Senior Project Manager

Michael McGaraghan  
Director



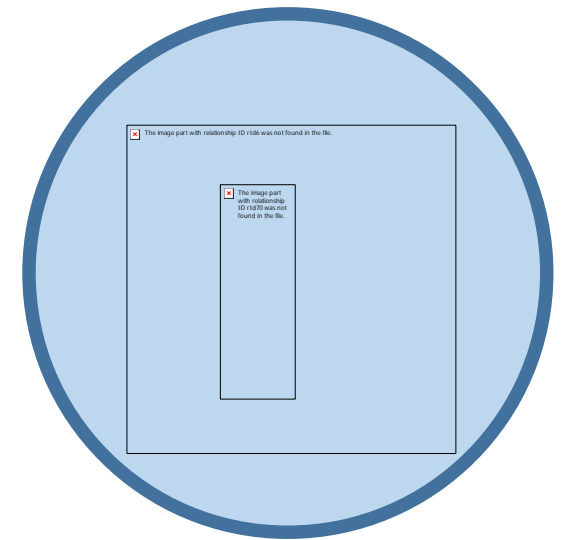
# Evaluation Highlights



Expand goals to include Electrification & Resilience



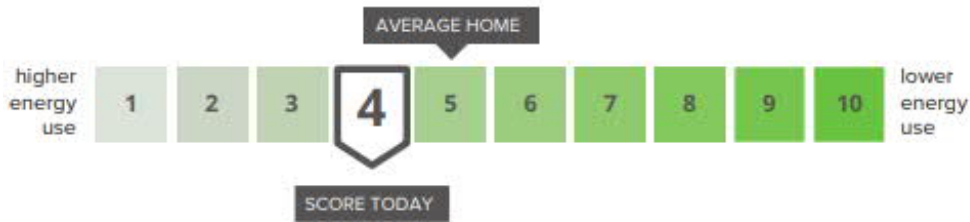
Leverage Rebates & Other Incentives



Increase Upgrades & Improve Tracking

# Including Electrification Measures

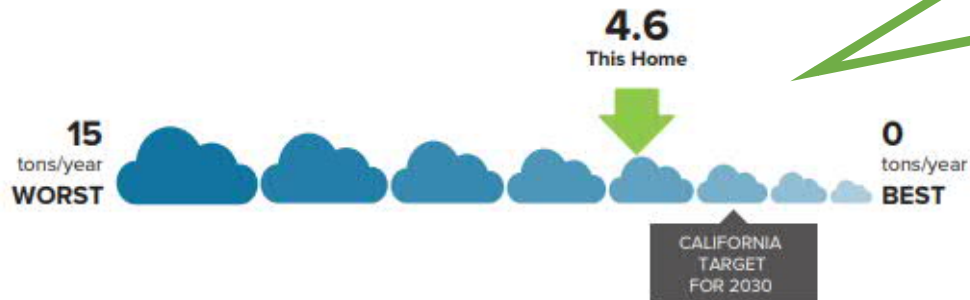
## Home Energy Score details



### Official Assessment | ID#290908

Home Energy Score is an easy way to see how energy efficient this home is compared to other homes. A higher score is better. This report also contains ways you can make your home more efficient and more comfortable.

## This home's carbon footprint



# Move assessment to time of listing



address, neighborhood, city, or ZIP code

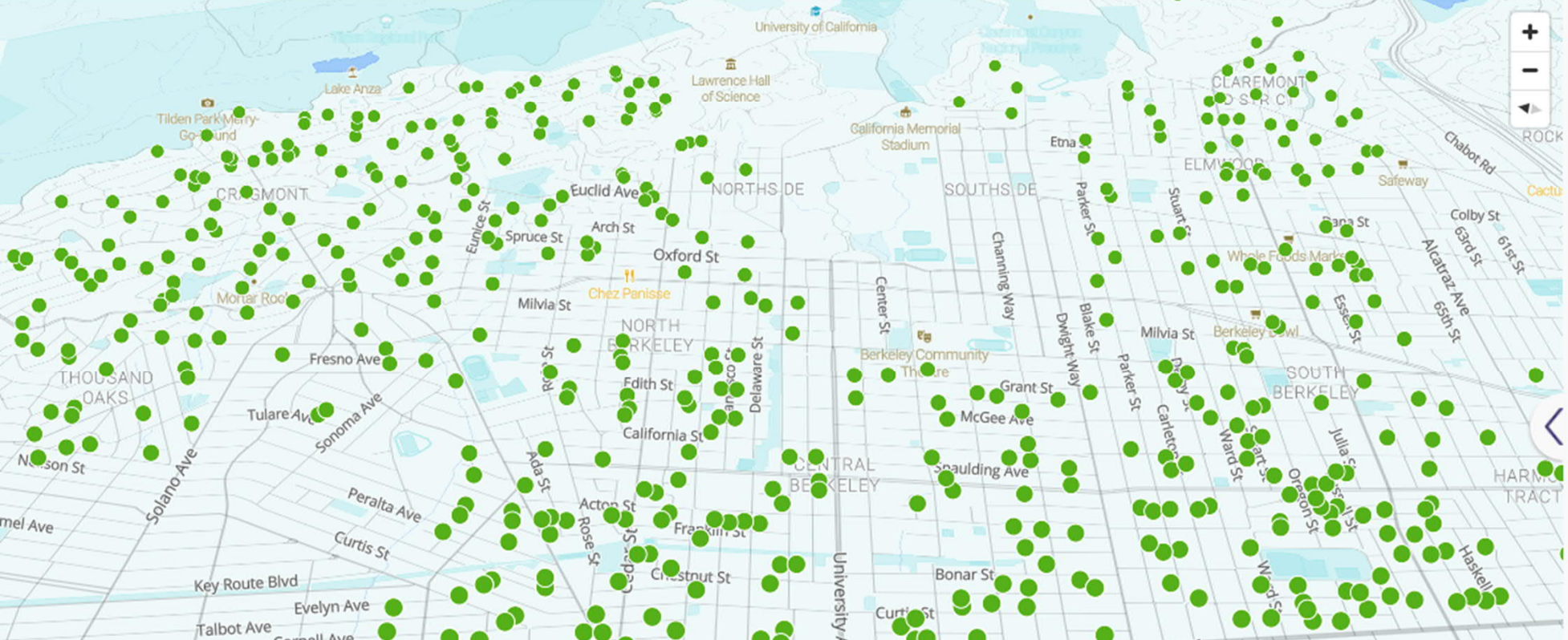


HERS Index

HES (Home Energy Score)

Solar

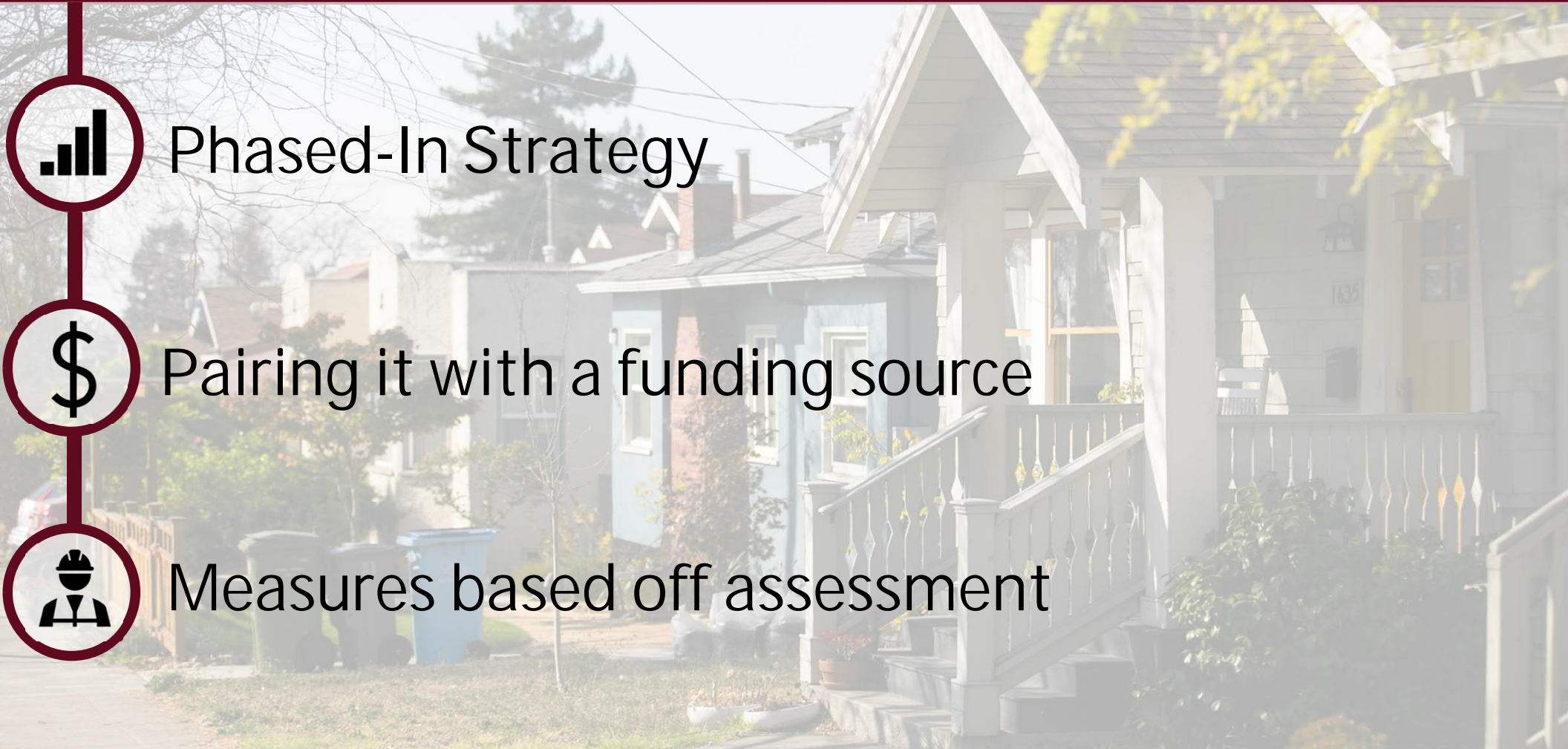
Home Certifications



HOME LISTINGS



# Propose mandatory requirements



Phased-In Strategy



Pairing it with a funding source



Measures based off assessment

# Key Takeaways from Creating BESO



# Thank You!



**Ammon Reagan**

BESO Program Coordinator

Office of Energy and Sustainable Development

(510) 981-7416

[ARegan@CityofBerkeley.info](mailto:ARegan@CityofBerkeley.info)

